

Lights

Made of Porcelain, Bakelite[®],
Metal and Glass

Catalogue 2024



New products:



LISILUX lights in black.
(Page 5)

THPG spotlights. Now as pendant lamp.
(Page 10)



THPG porcelain lights. Without visible surface-mounted cables.
(Page 6)

New sockets and glasses
in our MEDIUM light kit.
(Page 20)

Overview of our lights.



LISILUX lights
from Lindner
Page 3–5



THPG porcelain
lights
Page 6



THPG pendant lamp
and spotlights
Page 7 & 10–11



THPG MINIMAL
lights
Page 8–9



Basement and
outdoor lamps
Page 12–13



RIMSA-
working lights
Page 14–15



Translucent shades
made of bone china
Page 16



Triplex opal glass
lamps
Page 17



Lights from
Veneto
Page 18–19



MEDIUM
light kit
Page 20–21



MINIMAL
light kit
Page 22–23



Accessories and
spare parts
Page 24–28

LISILUX lights from Lindner: Porcelain, glass and pristine light.



In 2011, we bought this famous series of lights, along with the tools, original moulds and trademark rights, from a French corporation. Since then, we have had these classic purpose-built lights, which have been in production since the 1940s, manufactured by a German manufacturer of technical porcelain in Poland on the original tools. For decades, the design of these lights has been recognized as prime example of the solidity and functionality of German industrial design in the first half of the 20th century. The brand name „LISILUX“, introduced by Lindner during the late 1960s for this series, which was only ever modified slightly, derives from the German for „Lindner safety light“. It refers to the particular material strength of the porcelain bases and to the stable glass domes that reliably protect the light bulbs from environmental conditions.

Porcelain and glass have proven to be reliable not only in humid environments (sauna lights), but as ideal protection against aggressive, sometimes corrosive air pollutants. They don't corrode, and the smooth, hard surfaces are always easy to clean, even after many years of use. LISILUX is a functional light in the best sense of the word.

LISILUX-Leuchten

die idealen Feuchtraumleuchten

VORTEILE
die der Fachmann zu schätzen weiß:

- wärmesicher**
- schutzisoliert**
- flache Form**
- optimales Licht**
- Würgenippel**
- Ringfederkontakt**
- einfache Montage**
- kartonverpackt**
- preiswert**

	Watt	Fassungsgewinde	Höhe bzw. Ausladung mm	Ein- Sprung	Stück kg	mit Schutzglas, Wärm. Nummer	mit LINDNER-Glas DM Stück
LISILUX-Deckenleuchten							
	40-50	E 27	130	eine	0,44	400,6	400,7
	40-50	E 27	130	zwei	0,45	400,62	400,72
	60-75	E 27	130	eine	0,53	407,6	407,7
	60-75	E 27	130	zwei	0,54	407,62	407,72
	100	E 27	174	eine	1,50	308,6	308,1
	100	E 27	174	zwei	1,03	308,62	308,12
LISILUX-Wandleuchten							
	40-50	E 27	135	eine	0,52	401,6	401,7
	60-75	E 27	135	eine	0,50	406,6	406,7
Ersetzteil							
	40-60				0,15	11	11,7
	60-75				0,16	12	12,7
	100				0,35	13	13

Die aufgeführten Preise enthalten nicht die Mehrwertsteuer!

Alle Elektrizitätswerke fordern eine gewissenhafte Montage mit VDE-Material!

Deshalb: LISILUX

LINDNER · GMBH · BAMBERG



LISILUX white: An overview.

The LISILUX ceiling mounts are available in four sizes: S (Ø 83 mm), M (Ø 95 mm), L (Ø 112 mm) and XL (Ø 139 mm). The LISILUX wall mounts are available in two sizes: S (Ø 83 mm) and M (Ø 95 mm). By combining them with the clear, frosted or opalized LISILUX screw-in glasses or globe-shaped glasses, you will get the lights shown below:

For use in high-temperature saunas, we offer appropriately designed LISILUX ceiling mounts in size S and a wall-mounted fitting in size M. The sauna lamps feature a special seal and have been specifically tested by the VDE Testing and Certification Institute. The sauna versions should be combined only with the original LISILUX glasses.



Ceiling light LISILUX white S

Ø 83 mm, height 140 mm. Weight 600 g. E27, max. 60 W. IP54. VDE-certified.

Clear Product code **139629**
Frosted Product code **177050**
Opalized Product code **101270**

Ceiling light LISILUX white M

Ø 95 mm, height 130 mm. Weight 730 g. E27, max. 75 W. IP54. VDE-certified.

Clear Product code **100752**
Frosted Product code **100753**
Opalized Product code **101272**

Ceiling light LISILUX white L

Ø 112 mm, height 174 mm. Weight 1200 g. E27, max. 100 W. IP54. VDE-certified.

Clear Product code **139631**
Frosted Product code **177048**
Opalized Product code **101273**

Sauna wall-mounted fitting LISILUX white M

Ø 95 mm, height 174 mm. Base: Width 98 mm, height 76 mm, depth 130 mm. Weight 1100g. E27, max. 75 W. IP44. VDE-certified.

Clear Product code **100783**
Frosted Product code **139634**
Opalized Product code **101277**

Sauna ceiling light LISILUX white S

Clear Product code **100768**
Frosted Product code **100769**
Opalized Product code **101271**



Wall light LISILUX white S

Ø 83 mm, projection 132 mm. Weight 630 g. E27, max. 60 W. IP54. VDE-certified.

Clear Product code **100756**
Frosted Product code **100757**
Opalized Product code **101274**

Wall light LISILUX white M

Ø 95 mm, projection 140 mm. Weight 730 g. E27, max. 75 W. IP54. VDE-certified.

Clear Product code **139630**
Frosted Product code **177049**
Opalized Product code **101276**

Sauna wall light LISILUX white S

Clear Product code **100785**
Frosted Product code **100767**
Opalized Product code **101275**



Wall light white S opal glass

Ø 125 mm, projection 155 mm. Weight 710 g. E27, max. 60 W. IP54.

Product code **100797**

Wall light white M opal glass

Ø 150 mm, projection 170 mm. Weight 890 g. E27, max. 75 W. IP54.

Product code **100798**



Ceiling light white S opal glass

Ø 125 mm, height 155 mm. Weight 710 g. E27, max. 60 W. IP54.

Product code **100794**



Ceiling light white M opal glass

Ø 150 mm, height 185 mm. Weight 870 g. E27, max. 75 W. IP54.

Product code **100795**



Ceiling light white L opal glass

Ø 180 mm, height 230 mm. Weight 1300 g. E27, max. 100 W. IP54.

Product code **100796**



Ceiling light white XL opal glass

Ø 215 mm, height 270 mm. Weight 2000 g. E27, max. 200 W. IP54.

Product code **100781**

NEW: LISILUX black: An overview.

It seems so simple, but it's not: only two bases from our LISILUX range are suitable for a full-surface coloured glaze. With the others, it was not possible to achieve satisfactory opacity due to too many curves. We had the ceiling mounts in sizes S and M glazed by hand in black - the vibrant result was worth the effort.



Ceiling light LISILUX black S

Ø 83 mm, height 140 mm. Weight 600 g. E27, max. 60 W. IP54.

Clear Product code **101320**
Frosted Product code **101321**
Opalized Product code **101322**



Ceiling light LISILUX black M

Ø 95 mm, height 130 mm. Weight 730 g. E27, max. 75 W. IP54.

Clear Product code **101324**
Frosted Product code **101325**
Opalized Product code **101326**



Ceiling light black S opal glass

Ø 125 mm, height 155 mm. Weight 710 g. E27, max. 60 W. IP54.

Product code **101323**



Ceiling light black M opal glass

Ø 150 mm, height 185 mm. Weight 870 g. E27, max. 75 W. IP54.

Product code **101327**

NEW: THPG porcelain lights.

These in-house functional lights with porcelain bases have a wall-side connection for installation without visible surface-mounted cables. They can be positioned directly over the cable outlet in the wall, creating a particularly tidy appearance. The bases are manufactured exclusively for us by our long-standing production partner in Silesia using tools from the 1930s. Here, too, we use porcelain with its many application-specific advantages. The glass dome reliably shields the light source. A rubber ring between the base and glass ensures an extensive seal. The exact IP value can be found on the individual product.

These functional lights are optionally equipped with an bevelled base for wall mounting or a straight base for installation on the ceiling (or wall). The standard version comes with an opal globe-shaped glass. The bases are available in sizes M and L.



THPG wall light

Porcelain M opal glass

Porcelain base. Ø spherical glass 150 mm. Projection 195 mm. Weight 1260 g. Socket E27, max. 60 W. IP20. Product code **177031**



THPG wall light

Porcelain L opal glass

Porcelain base. Ø spherical glass 180 mm. Projection 210 mm. Weight 1260 g. Socket E27, max. 60 W. IP20. Product code **177033**

THPG ceiling light Porcelain M opal glass

Porcelain base. Ø spherical glass 150 mm. Total height 190 mm. Weight 850 g. Socket E27, max. 60 W. IP20. Product code **177030**

THPG ceiling light Porcelain L opal glass

Porcelain base. Ø spherical glass 180 mm. Total height 240 mm. Weight 1270 g. Socket E27, max. 60 W. IP20. Product code **177032**



The M bases shown here can be combined with the shades and glasses in our MEDIUM light kit (page 20).

THPG pendant lamps made of Bakelite® and glass.

With its weight of 150 grams, the solid Bakelite body of this pendant lamp is a reliable carrier for heavy glasses. For more than 50 years, identical lights have been used in factory halls and on construction sites. However, they are no less recommendable for kitchens, living rooms, workrooms and cellars - at least not if they are fitted with one of four mouth-blown opal glass shades in soft shapes or a structured, cylindrical pressed glass, as shown here.

Our pendant lamp is supplied with a 1.5 metre long textile cable as standard. The screw and strain relief are fitted with a rubber seal. The socket is made of porcelain. This lamp can be combined with all glasses and shades from our MEDIUM light kit (page 20).

Lights for the living room.

The basic form of the Bakelite pendant lamp consists of a pendant shade holder and a glass shade. In combination with the canopies and cable options shown on page 9, it can be customized to your requirements. For bulbs see page 26.



THPG opal glass sphere pendant light

Bakelite body, hand-blown opal glass shade: Ø 145 mm. Height 235 mm. Weight 820 g. Porcelain socket E27, max. 60 W. IP20.

Product code **100849**



THPG opal glass cone pendant light

Bakelite body, hand-blown opal glass shade: Ø 145 mm. Height 230 mm. Weight 1000 g. Porcelain socket E27, max. 60 W. IP20.

Product code **100850**



THPG opal glass droplet pendant light

Bakelite body, hand-blown opal glass shade: Ø 115 mm. Height 230 mm. Weight 970 g. Porcelain socket E27, max. 60 W. IP20.

Product code **100851**



THPG opal glass curved cone pendant light

Bakelite body, hand-blown opal glass shade: Ø 160 mm. Height 240 mm. Weight 1100 g. Porcelain socket E27, max. 60 W. IP20.

Product code **100852**



THPG clear pressed glass pendant light

Bakelite body, structured pressed glass shade: Ø 100 mm. Height 270 mm. Weight 1000 g. Porcelain socket E27, max. 60 W. IP20.

Product code **100848**

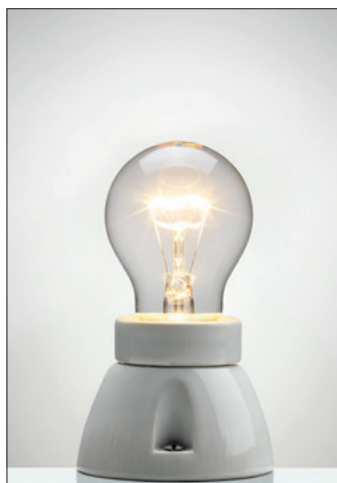
With black porcelain canopy
Product code **101091**



Bakelite® is a registered trademark of Bakelite GmbH in Iserlohn.

On page 9 you can add a canopy and adjust the cable colour and length.

THPG MINIMAL lights: Plain ceiling and wall mounts.



Our in-house minimal lights embody our most fundamental design principles in a particularly vivid way: material solidity, sober functionality and constructive transparency. Here, you won't find obtrusively pompous shapes that may initially attract the eye, but soon start to tire it. The few components used are made of materials that have been tried and tested in electrical engineering: porcelain and Bakelite. Thanks to their inconspicuous appearance, these lights blend seamlessly into almost any living or working environment.



MINIMAL ceiling lamp holder porcelain white

Straight three-piece porcelain lamp holder. Ø max. 75 mm, height 60 mm. E27, max. 75 W. IP20. VDE-certified.
Product code **152643**



MINIMAL ceiling lamp holder porcelain black

Straight three-piece porcelain lamp holder. Ø max. 75 mm, height 60 mm. E27, max. 75 W. IP20. VDE-certified.
Product code **152649**



MINIMAL wall lamp holder porcelain white

Bevelled three-piece porcelain lamp holder. Ø max. 75 mm, projection 85 mm. E27, max. 75 W. IP20. VDE-certified.
Product code **152647**



MINIMAL wall lamp holder porcelain black

Bevelled three-piece porcelain lamp holder. Ø max. 75 mm, projection 85 mm. E27, max. 75 W. IP20. VDE-certified.
Product code **152651**



MINIMAL angled lamp holder porcelain white

Angled three-piece porcelain lamp holder. Ø 65 mm, height 80 mm, projection 75 mm. E27, max. 75 W. IP20.
Product code **152645**



MINIMAL angled lamp holder porcelain black

Angled three-piece porcelain lamp holder. Ø 65 mm, height 80 mm, projection 75 mm. E27, max. 75 W. IP20. VDE-certified. Product code **152650**



MINIMAL ceiling lamp holder Bakelite®

Straight three-piece Bakelite lamp holder. Ø max. 73 mm, height 60 mm. E27, max. 75 W. IP20. VDE-certified.
Product code **153109**



MINIMAL wall lamp holder Bakelite®

Bevelled three-piece Bakelite lamp holder. Ø max. 75 mm, projection 85 mm. E27, max. 75 W. IP20. VDE-certified. Product code **153108**

ELDECO.

An in-house production from our Lindner range: the slightly conical porcelain base ELDECO is a classic from the 1950s. The light bulb specially designed for this lamp is unfortunately no longer produced; however, the base also serves as an attractive holder for other E27 light sources.

ELDECO lamp holder porcelain

Porcelain lamp holder for walls or ceilings. Ø max. 70 mm, height 60 mm. E27, max. 40 W. IP20. VDE-certified. Product code **100780**



The MINIMAL porcelain wall and ceiling lamp holders can be combined with the shades in our MINIMAL light kit (page 22).

Also for hanging: The THPG MINIMAL lights.

Simple pendant lights assembled from high-quality components in our own light workshop. Plastic sockets and PVC cables have reduced these lights to temporary use on construction sites, where they can be removed as quickly as possible when no longer needed. Of course, our pendant MINIMAL lights can also be used in construction and renovation, but they do not have to be removed when the work is done. Instead, they can be modified in many ways by adding one of our porcelain canopies (with or without a cable outlet) and by combining them with differently coloured cables. The clamping ring makes it possible to combine the first three pendant lights shown here with the shades from our MINIMAL light kit and thus modify them for a wide variety of lighting purposes.



MINIMAL pendant light Bakelite® with pull switch

Black Bakelite socket with black 1.5 m textile cable. E27, max. 60 W. With strain relief and pull cord. Bulb not included.
Product code **101180**



MINIMAL pendant light porcelain white

White porcelain socket with white 1.5 m textile cable. E27, max. 60 W. Weight 200 g. With strain relief. Bulb not included.
Product code **101178**



MINIMAL pendant light Bakelite® with shade ring

Black Bakelite socket with shade ring and black 1.5 m textile cable. E27, max. 60 W. With integrated strain relief. Bulb not included.
Product code **101191**



MINIMAL pendant light Bakelite®

Black Bakelite socket with black 1.5 m textile cable. E27, max. 60 W. Weight 200 g. With strain relief. Bulb not included.
Product code **101179**

With black porcelain canopy
Product code **101091**

Options for our pendant lights.

You can combine any pendant light from our range (also from the light kits) with these porcelain canopies. Here, you can also adjust the cable length and colour.



White porcelain canopy

White glazed porcelain hemisphere. Ø 95 mm, height 55 mm.

Porcelain white

Product code **101090**

Porcelain white with side cable entry
Product code **101194**



Black porcelain canopy

Black glazed porcelain hemisphere. Ø 95 mm, height 55 mm.

Porcelain black

Product code **101091**

Porcelain black with side cable entry
Product code **101193**



Customisable textile cables

Our pendant lamps can be fitted with a differently coloured textile cable for an additional charge.

Red Product code **900534.2**
White Product code **900534.7**
White/black Product code **900534.4**
Black Product code **900534.1**

Longer cables

Cable lengths are customisable. The 1.5 m standard cable can be extended in 10 cm steps. Enter 1 = 10 cm or a higher number for the additional length in the shopping cart.

Product code **900535**



NEW: THPG pendant spotlight.

These simple pendant lights from our own production are based on the reflectors of our wall-mounted spotlights, which are used for work on machines or in workshops. Their workmanship is correspondingly robust. We offer these pendant lights made of powder-coated sheet steel in white, black and grey, the black and the white version also in a smaller size. You can combine both versions with one of our porcelain canopies; cable length and colour are customisable (see page 9).

THPG pendant spotlight large

Bakelite socket. Painted steel reflector. Reflector: Ø 155 mm, length 195 mm, weight 260 g. With 1.5 m fabric cable. E27, max. 60 W.

White	Product code 182560
Black	Product code 182561
Grey	Product code 182562

THPG pendant spotlight small

Bakelite socket. Painted steel reflector. Reflector: Ø 100 mm, length 115 mm, weight 160 g. With 1.5 m fabric cable. E27, max. 60 W.

White	Product code 182563
Black	Product code 182564



THPG wall-mounted spotlights.

Usually, this type of light is used for workplaces at machines or in workshops, which explains their particularly robust design. We manufacture these wall-mounted spotlights in white, black and grey in our own workshop, with the black and white versions also available in a smaller size. All models are made of strong, powder-coated steel and fitted with swiveling reflectors.

THPG wall-mounted spotlight large

Porcelain socket. Painted steel housing and reflector. Reflector: Ø 155 mm, length 195 mm. Projection 285 mm, weight 470 g. E27, max. 60 W. Screws for wall mounting are supplied, dowels are not.

White	Product code 182550
Black	Product code 182551
Grey	Product code 182552

THPG wall-mounted spotlight small

Porcelain socket. Painted steel housing and reflector. Reflector: Ø 100 mm, length 115 mm. Projection 190 mm, weight 470 g. E27, max. 60 W. Screws for wall mounting are supplied, dowels are not.

White	Product code 182553
Black	Product code 182554

Outdoor lights for indoors: Bamag U7 – the Berlin gas lantern.

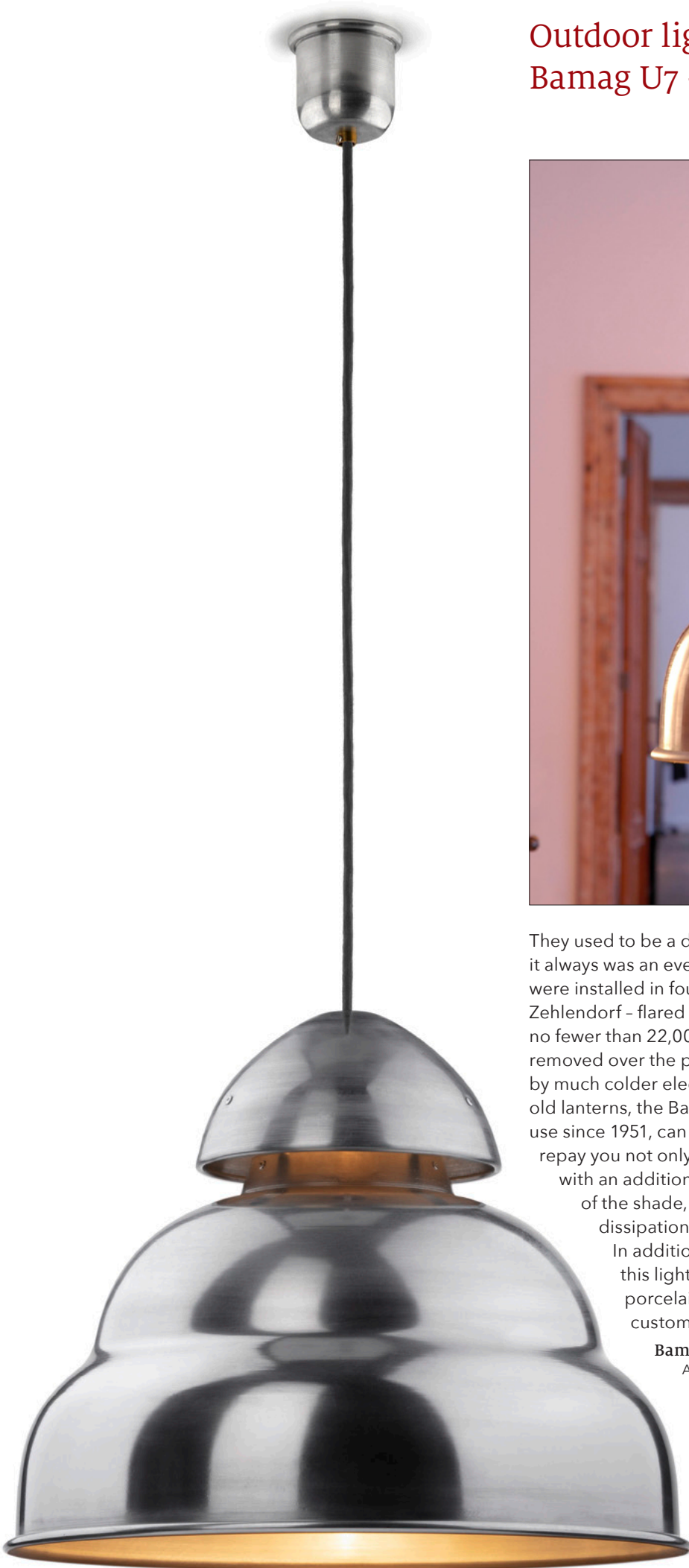


They used to be a distinctive feature of Berlin's cityscape, and it always was an event when these lanterns – some of which were installed in four rows along streets in Charlottenburg and Zehlendorf – flared up at dusk. Berlin's gas lanterns, of which no fewer than 22,000 were in use at one point, have been removed over the past decade despite protests and replaced by much colder electric lanterns. The most famous among the old lanterns, the Bamag U7 top-mounted light that has been in use since 1951, can now be given a refuge in your home. It will repay you not only with its pleasant visual appearance, but with an additional light that comes from the top opening of the shade, which was originally intended only for heat dissipation.

In addition to the matching aluminium canopy, this light can also be combined with one of our porcelain canopies. The cable length and colour are customisable (see page 9).

Bamag U7

Aluminium sheet (Al99.5).
Lamp head: Ø 420 mm, height 360 mm.
Canopy: Ø 76 mm, height 76 mm,
1.5 m black textile cable.
Weight 1780 g, E27.
Product code **107401**



Basement and outdoor lamps.

Weathering and mechanical influences place special demands on the design and material of lamps used in damp rooms or in outdoor areas. For this reason, all our lamps in this segment are made of solid cast iron, aluminium or brass and are fitted with a cover of thick pressed glass.

The basement lamp is also available as a lighter, but by no means fragile version made of Bakelite, which is on a par with its heavy cast-iron siblings in terms of dust and moisture protection. Please refer to the respective lamp for the IP protection class.



Oval cast iron basement lamp small
Length 170 mm, width 125 mm, height 115 mm.
Weight 1300 g. Porcelain socket E27, max. 60 W.
IP54. Product code **100503**



Oval cast iron basement lamp large
Length 195 mm, width 135 mm, height 115 mm.
Weight 1700 g. Porcelain socket E27, max. 100 W.
IP54. Product code **100506**



Round cast iron basement lamp
Ø 200 mm, height 100 mm. Weight 2300 g.
Porcelain socket E27, max. 100 W. IP54.
Product code **100502**



Oval Bakelite® basement lamp small
Length 170 mm, width 125 mm, height 115 mm.
Weight 550 g. Porcelain socket E27, max. 60 W.
IP54. Product code **100500**



Oval Bakelite® basement lamp large
Length 195 mm, width 135 mm, height 115 mm.
Weight 700 g. Porcelain socket E27, max. 100 W.
IP54. Product code **100501**



Round Bakelite® basement lamp
Ø 200 mm, height 100 mm. Weight 1000 g.
Porcelain socket E27, max. 100 W. IP54.
Product code **100499**

Wall or ceiling light for indoors and outdoors. This heavy, robust lamp is cast in Italy from brass. It is actually (not only visually) suitable for the extreme demands of rough seafaring: the housing and protective cage are made of solid, polished brass, absolutely resistant to corrosion and weathering.

Cellar light brass small
Length 200 mm, width 130 mm, height 105 mm. Weight 1300 g.
Porcelain socket E27, max. 60 W. IP54. Product code **130748**

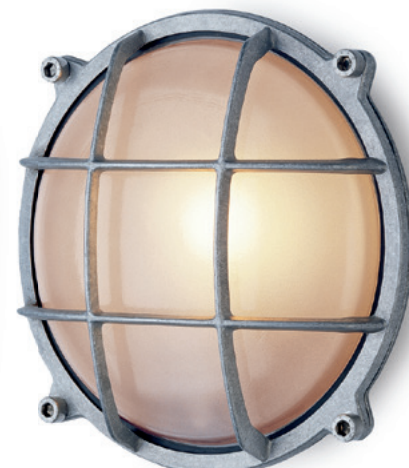


Cellar light brass large
Length 230 mm, width 160 mm, height 110 mm. Weight 1800 g.
Porcelain socket E27, max. 60 W. IP54. Product code **130749**

The housing and protective cage of these lights are made of cast aluminium, cover made of satinised glass. Supplied without light source. Allen key supplied.

Wall light aluminium oval
Length 200 mm, width 110 mm, depth 120 mm. Weight 900 g.
Porcelain socket E27, max. 60 W. IP45. Product code **165250**

Wall light aluminium round
Ø 210 mm, depth 95 mm. Weight 1100 g.
Porcelain socket E27, max. 60 W. IP45. Product code **165252**



Cast iron or aluminium: Outdoor lamps from Sweden.



Angular cast iron: This Swedish outdoor lamp dates back to the 1920s. As with the original, the cast iron components, such as the wall cover, bracket and lamp head, are soldered together and triple dip painted in matte black. A version for corner mounting is also available.



Wall lamp cast iron black

Total height 270 mm, projection 350 mm, Ø glass globe 180 mm, height wall-mounting panel 105 mm, width 75 mm. Weight 2300 g. Porcelain socket E27, max. 60 W. IP44. Product code **104100**

Wall lamp cast iron black for corner mounting

Total height 270 mm, projection 370 mm, Ø glass globe 180 mm, height wall-mounting panel 105 mm. Weight 2500 g. Porcelain socket E27, max. 60 W. IP44. Product code **104200**

Sleek cast aluminium: This outdoor lamp is Swedish as well and dates back to the 1940s. The lamp arm is 27 cm long and is cast in one piece. The internal thread in the lamp head fits any of the seven screw-in glasses we offer. The light arm is powder-coated in black or grey and is available with a 90-degree angle or with a slightly ascending 80-degree angle. Both models are also available for corner mounting. A total of 56 possible combinations; IP44 when fitted.



Wall bracket 90 degrees

Projection 290 mm. Weight 800 g. E27, max. 60 W.

Grey
Product code **191101**

Black
Product code **191102**

Wall bracket 90 degrees for corner mounting

Projection 290 mm. Weight 800 g. E27, max. 60 W.

Grey
Product code **191103**

Black
Product code **191104**

Wall bracket 80 degrees

Projection 270 mm. Weight 700 g. E27, max. 60 W.

Grey
Product code **191105**

Black
Product code **191106**

Wall bracket 80 degrees for corner mounting

Projection 270 mm. Weight 700 g. E27, max. 60 W.

Grey
Product code **191107**

Black
Product code **191108**



Configuration example:
Wall bracket 90 degrees black
Product code **191102**
Cylindrical glass clear
Product code **191109**



Cylindrical glass clear

Total height 185 mm, max. width 105 mm. Weight 400 g.

Product code **191109**



Cylindrical glass opal

Total height 185 mm, max. width 105 mm. Weight 400 g.

Product code **191110**



Cylindrical glass matt

Total height 185 mm, max. width 105 mm. Weight 400 g.

Product code **191111**



Spherical glass opal 150 mm

Total height 160 mm, Ø 150 mm. Weight 400 g.

Product code **191112**



Conical glass clear

Total height 150 mm, max. width 160 mm. Weight 560 g.

Product code **191113**



Conical glass opal

Total height 150 mm, max. width 160 mm. Weight 560 g.

Product code **191114**



Glass droplet opal

Total height 160 mm, Ø 150 mm. Weight 400 g.

Product code **191115**

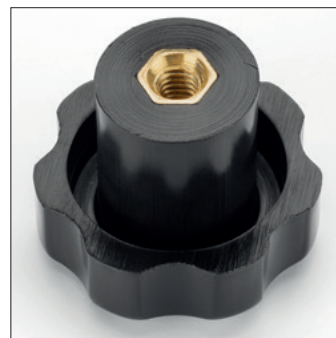


Configuration example:
Wall bracket 80 degrees black
Product code **191106**
Cylindrical glass matt
Product code **191111**

RIMSA: The best value for the price.



The prototype of this balanced-arm lamp from the early 20th century was originally intended as a long-reach, steerable and precisely adjustable workplace lamp. The towering design, with its specifically designated joints and heavy top, poses some considerable technical challenges: neatly working joints that reliably maintain a chosen position, allow corrections at any time and balance the effects of gravity for long periods of time by means of springs that do not fatigue or wear out. Since the 1980s, cheap imitations of such a work light have been pushed into the market at rock-bottom prices. There have been more recent attempts to salvage the by now completely botched design, but most of them are extremely expensive. We offer the Italian original, which is still produced today by RIMSA, an Italian manufacturer that builds for us "new originals" of its balanced-arm lamps from 1946 and 1964. The lamp head can be swiveled generously thanks to a patented steel articulated socket at the upper end of the arm, which has been in production since 1946. The light cone can be easily and continuously fixed at almost any angle to illuminate the desired location with centimeter precision. Please order the lamp in the colour of your choice, along with a suitable mount.



*RIMSA Model 10 grey
Product code 191211
Table base grey
Product code 191209*



*RIMSA Model 80 black rubberized
Product code 191202
Table base black rubberized
Product code 191210*

RIMSA Model 10

Model 10 has been in production almost unchanged since 1964. The only change that has been made is that the original one-piece aluminium light head has been replaced by a two-component version with a reflector made of pressed sheet steel and glass fiber-reinforced nylon. Compatible with a table base, wall mount, clamp base or table mounting base. In black, white or grey.

Light arm length 1.08 m. Projection max. 1.2 m. Lamp head Ø 186 mm. Weight 1450 g. Porcelain socket E27, max. 60 W.

Black Product code **191212**
Grey Product code **191211**
White Product code **191213**

RIMSA Model 80

A fresh interpretation of the Model 10 on the occasion of RIMSA's 80th anniversary with more generous illumination thanks to a larger reflector diameter. Compatible with a table base, clamp base, wall mount, table mounting base. Available in grey hammer finish or black rubberized.

Light arm length 1.08 m. Projection max. 1.2 m. Lamp head: Ø 200 mm. Weight 1600 g. Porcelain socket E27, max. 60 W.

Black rubberized Product code **191202**
Grey hammer finish Product code **191201**



RIMSA table base

Weight (with cast iron core) 1040 g.

Black (M10) Product code **191224**

Grey (M10) Product code **191223**

White (M10) Product code **191225**

Black rubberized (M80) Product code **191210**

Grey hammer finish (M80) Product code **191209**



RIMSA clamp base

Black (M10) Product code **191215**

Grey (M10) Product code **191214**

White (M10) Product code **191216**

Black rubberized (M80) Product code **191204**

Grey hammer finish (M80) Product code **191203**



RIMSA Model Mec 103

Originally developed as a work lamp for technical activities. The spring mechanism of the Models 10 and 80 has been replaced with an articulated mechanism that maintains the selected position even when the lamp is exposed to strong vibrations in the work environment. Other features include a reflector with a handle and a base plate with an adjustable ball joint that can be screwed on tightly. The enclosed adapter can be used to connect the lamp to a clamp base, a table base or a wall mount if the table or work surface does not accommodate drilled holes. The Mec 103 has a black hammer finish.

Light arm length 1.12 m (lower part 500 mm, middle part 280 mm, upper part 340 mm). Projection max. ca. 1.2 m. Lamp head Ø 165 mm. Weight 1350 g. Porcelain socket E27, max. 60 W.

Product code **191226**



RIMSA table mounting base

Black (M10) Product code **191221**

Grey (M10) Product code **191220**

White (M10) Product code **191222**

Black rubberized (M80) Product code **191208**

Grey hammer finish (M80) Product code **191207**



RIMSA wall mount

Black (M10) Product code **191218**

Grey (M10) Product code **191217**

White (M10) Product code **191219**

Black rubberized (M80) Product code **191206**

Grey hammer finish (M80) Product code **191205**

JUMO jointed Bakelite® lamp.

In 1945, the engineers of the French lamp manufacturer JUMO designed a jointed lamp that can be extended to a height of 41 cm by means of three joints, but as soon as its light is no longer needed, it shrinks by folding all its extremities back in and concealing them under a hood. This hood, which is made of Bakelite, also serves as a shade. The price is explained by the material quality of the 70 individual parts and the fact that they are carefully assembled by hand. We have acquired the ambitious project of the JUMO reissue from two French enthusiasts and have since been manufacturing this lamp ourselves.

JUMO jointed Bakelite® lamp

E14 socket. Pressure switch in the bottom part. Height continuously adjustable from 136 to 410 mm. Base plate length max. 280 mm, max. width 190 mm. Weight 1300 g. Integrated cable rewind in the base part, cable length 2 m.

Product code **100478**



Translucent shades made of bone china.

Well known for its brilliant whiteness and light transmission, bone china is considered the best and finest porcelain of all. In addition to kaolin, feldspar and quartz sand, it contains up to 50 percent burned bone ash, whose high proportion of calcium oxide and calcium phosphate gives this porcelain its special translucence.

1. Porcelight:

The last lamps, only available from us.

When Danish designer Erik Magnusson designed this porcelain pendant lamp back in 1982, he made a reverberating impact. The look of the lamp known today as "Porcelight" is soothing even when it is switched off - even more so when the light illuminates the room through the translucent bone china shade. Available with shade diameters of 11 and 14 cm.



**Porcelight pendant lamp P11
with black cord**

Height 120 mm, porcelain shade
Ø 110 mm, cable length 3 m.
Weight 380 g. Socket G9, max. 40 W.
Product code **182251**



**Porcelight pendant lamp P14
with black cord**

Height 155 mm, porcelain shade
Ø 140 mm, cable length 3 m.
Weight 660 g. Socket G9, max. 40 W.
Product code **182252**



2. Aging with dignity:

Bone china with copper.

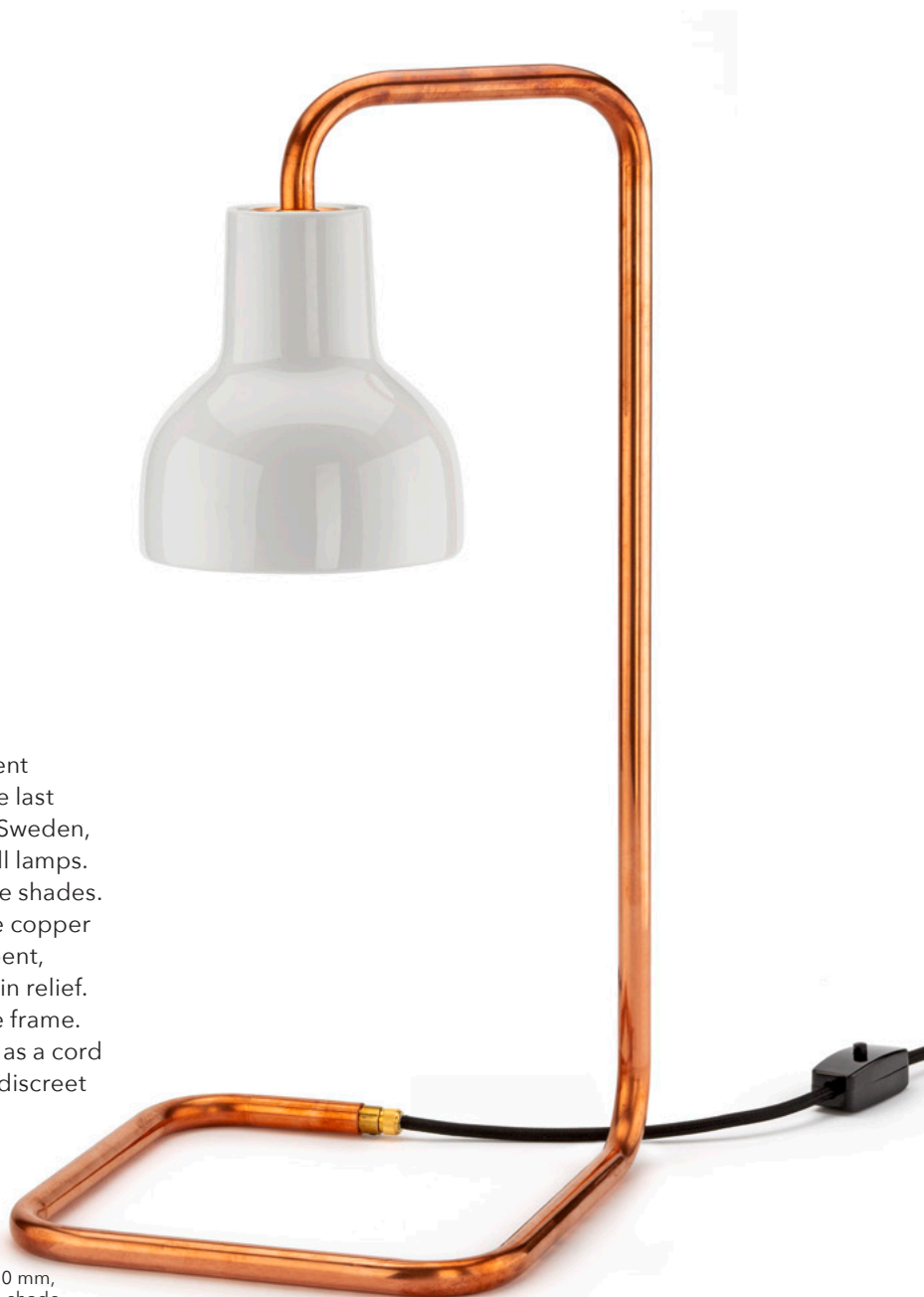
From our own workshop: We combined the translucent bone china shades, which we acquired along with the last remaining stock of Magnusson's Porcelight lamps in Sweden, with unpainted copper tubing to create floor and wall lamps. Copper fits particularly well to the warm light of these shades. During the sophisticated manufacturing process, the copper tube is filled with sand so it will not break when it is bent, and a thread is soldered into the cable outlet for strain relief. Another complex step involves precisely aligning the frame. The table lamp is shipped with a textile cable as well as a cord switch and plug made of Bakelite®. These lamps are discreet in appearance, solid in design.

Wall lamp copper and bone china

Height 280 mm, width 145 mm,
depth 300 mm. Wall escutcheon
Ø 115 mm, porcelain shade
Ø 140 mm. Weight 1050 g.
Product code **101221**

Table lamp copper and bone china

Height 520 mm, width 250 mm,
depth 250 mm, porcelain shade
Ø 140 mm, 1.5 m textile cable.
Weight 2050 g.
Product code **101222**



Triplex opal glass lamps: Three layers of glass.

The glass shades of these pendant tube, table and wall lamps are opalized in a highly complex process in which the handblown internal basic form of clear glass is first "overlaid" by a layer of white glass and this in turn by a final layer of clear glass (= double-overlaid glass). The light cast from such a shade is brilliant but glare-free.

1. Pendant tube lights.

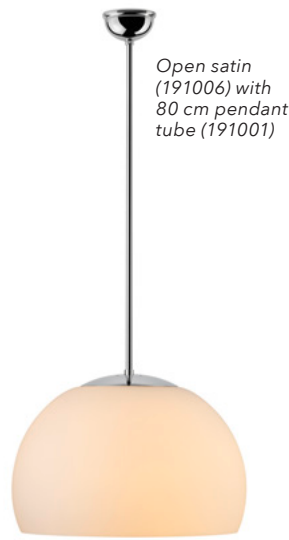
Suspension by means of a pendant tube fitting, including canopy and bright chrome "monk's cap". Both the 30 and 80 cm versions can be combined with any of the four glass shades shown below; for this reason, suspension and glass will have to be ordered separately. IP23, E27 socket made of steel and ceramic (max. 100 W). Manufactured in West Germany.



Spherical glass satin (191004) with 30 cm pendant tube (191002)



Spherical glass satin (191004) with 80 cm pendant tube (191001)



Open satin (191006) with 80 cm pendant tube (191001)



Stepped sphere satin (191008) with 80 cm pendant tube (191001)



Cylinder satin (191012) with 80 cm pendant tube (191001)

Pendant tube
With metal fitting, monk's cap and chrome canopy.
30 cm Product code **191002**
80 cm Product code **191001**

Spherical glass 300 mm
Ø 300 mm.
High gloss Product code **191003**
Satin Product code **191004**

Spherical glass 350 mm open
Ø 350 mm, height 230 mm.
Satin Product code **191006**

Stepped spherical glass 350 mm
Ø 350 mm, height 310 mm.
High gloss Product code **191007**
Satin Product code **191008**

Cylindrical glass 350 mm
Ø 350 mm, height 260 mm.
High gloss Product code **191011**
Satin Product code **191012**

2. Table and wall lamps of the 1920s.

The design of this lamp probably originates from a draft version by Wolfgang Tümpel, whose metalwork from the golden days of Burg Giebichenstein and Weimar Bauhaus today sells for high prices at auctions. We had an original made of sheet steel and window glass. Its modest execution testified to the scarcity of materials in the years shortly after the First World War. We now have the base of the table lamp cast from brass and the glass cover turned from the same material, which gives it a stable weight of 1.2 kg. The cylinder of handblown triplex opal glass with a diameter of eight centimeters requires the use of candle light bulbs (E14). The table lamp and the wall lamps we derived from it are beautiful testimonies of a design approach that allows the traditional forms (here: the candlestick) to resonate in new technical worlds (here: electric light) in a sober and non-sentimental manner.



Table light triplex opal glass
Chrome-plated brass. Glass cylinder Ø 80 mm, cast brass foot Ø 115 mm, height 280 mm, textile cable 1.8 m. Weight 1200 g. E14, max. 40 W.
Product code **163945**



Single-light wall lamp triplex opal glass
Chrome-plated brass. Triplex opal glass cylinder Ø 80 mm, height 315 mm, projection 115 mm. Wall mount 80 x 150 mm. Weight 840 g. E14, max. 40 W.
Product code **163946**



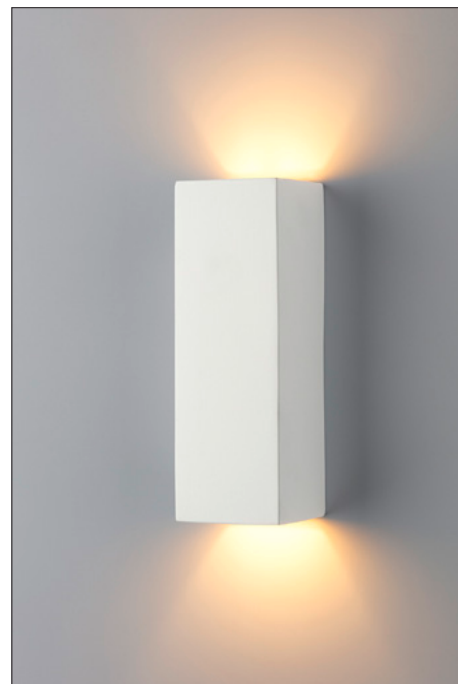
Double-light wall lamp triplex opal glass
Chrome-plated brass. Triplex opal glass cylinder Ø 80 mm, height 315 mm, projection 110 mm. Wall mount 80 x 150 mm. Weight 1960 g. E14, max. 40 W.
Product code **171640**

Lights from Veneto.

Its wealth of chalk, marble, clay, plaster, lime, soapstone and porcelain clay has made Veneto in Italy one of the most important locations for the ceramic industry in the whole of Europe. To this day, the region is home to manufacturers of high-quality handcrafted lights, some of which date back to the Middle Ages.

1. Unobtrusive ceramics: Gypsum.

Neither the basic geometric shapes of these lights produced near Vicenza nor the glare-free light that emanates from them draw attention to themselves. This is why they look just as good in living rooms as they do in hallways and stairwells. The pleasant surface can also be painted or wallpapered over in the colour of the wall or a contrasting colour.



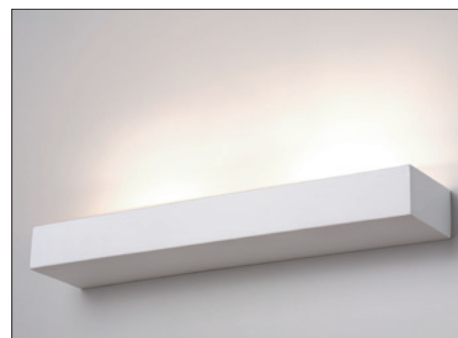
Wall lamp rectangular small

220 x 50 x 100 mm. Weight 660 g. R7s, max. 120 W. Product code **182413**



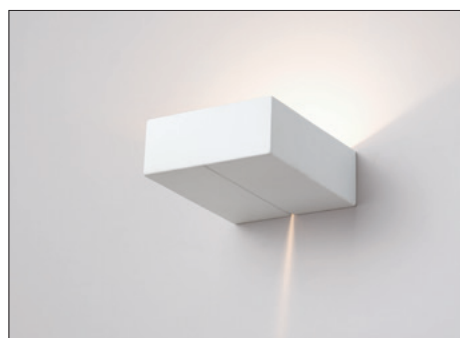
Wall lamp rectangular medium

350 x 50 x 100 mm. Weight 1000 g. R7s, max. 120 W. Product code **182414**



Wall lamp rectangular large

505 x 50 x 100 mm. Weight 1400 g. R7s, max. 120 W. Product code **182415**



Wall lamp rectangular with light slit

150 x 60 x 180 mm. Weight 700 g. R7s, max. 60 W. Product code **182417**



Wall lamp square

210 x 210 x 650 mm. Weight 1100 g. R7s, max. 80 W. Product code **182416**



Wall lamp rectangular vertical

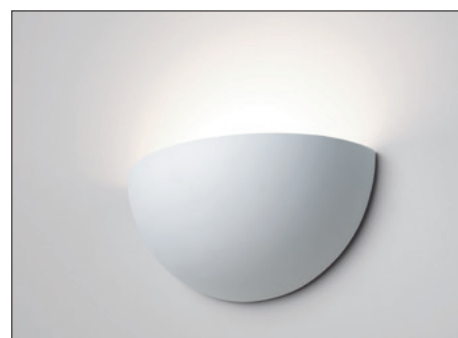
70 x 205 x 700 mm. Weight 460 g. 2 x R7s, max. 2 x 33 W. Product code **182418**

Wall lamp half shell with glass bottom

245 x 90 x 120 mm. Weight 460 g. E27, max. 57 W. Product code **182419**

Wall lamp half shell

305 x 150 x 150 mm. Weight 460 g. E27, max. 57 W. Product code **182420**



2. Lights made of porcelain and enamelled steel.

Ceramiche Fabbro, an old factory in Rivignano, Italy, makes these beautiful lamps out of porcelain and enamel (porcelain-glazed steel), in addition to a variety of other ceramic art and utility items. They are all designed for indoor use.



Porcelain wall lamp with enamel shade

Sheet steel shade, black exterior, white enamel interior. Ø 240 mm, height 115 mm, projection 300 mm. Oval porcelain wall escutcheon and enamelled arm. Weight 740 g. Metal socket E27, max. 75 W, with porcelain counter ring.

Product code **119050**



Porcelain ceiling lamp

Natural white porcelain shade. Ø 420 mm, height 105 mm. Porcelain ceiling escutcheon Ø 115 mm, with solid brass shade holder. The shade is held by 3 knurled screws. Weight 1000 g. Metal socket E27, max. 60 W.

Product code **119048**



Enamel/porcelain ceiling lamp

Sheet steel shade, black exterior, white enamel interior. Ø 295 mm, height 105 mm. Porcelain ceiling escutcheon Ø 115 mm. Weight 680 g. Metal socket E27, max. 75 W, with porcelain counter ring.

Product code **119049**



Porcelain wall light

The design of this lamp is about 80 years old. Base, shade and counter ring are made of porcelain. Oval base. Shade Ø 210 mm, projection 185 mm. Weight 800 g. Metal socket E27, max. 100 W.

Product code **152267**

Note: Owing to the nature of the manufacturing process, larger tolerances may occur in the shape of the shades and the position of the sockets.



Porcelain pendant lamp

Height 65 mm, Ø 11.5 cm. Weight 300 g. Porcelain socket E27, max. 60 W. Cable length 1.5 m.

Product code **100031**



Porcelain pendant lamp with porcelain shade

Height 65 mm, Ø 11.5 cm. Weight 690 g. Porcelain shade Ø 210 mm. Porcelain socket E27, max. 60 W. Cable length 1.5 m.

Product code **101181**



Porcelain pendant lamp with enamel shade

Height 65 mm, Ø 11.5 cm. Weight 950 g. Enamel shade Ø 295 mm. Porcelain socket E27, max. 60 W. Cable length 1.5 m.

Product code **101182**

Decide for yourself: 1. Our MEDIUM light kit.

The bases and sockets which you have already seen on the previous pages are the basis of the THPG light kits. These can be divided into two groups based on the diameter of their internal threads: MINIMAL and MEDIUM. The MINIMAL bases can be combined with matching shades (next double page), the MEDIUM bases with matching shades and glasses (on this page). If you also select your favourite cables and canopies, you can create customised lamps that differ significantly from one another in terms of design and light pattern. A variation in detail is often enough to create a different overall impression or to better integrate the lamp into its future surroundings.

The first basic decision is the size (MEDIUM or MINIMAL?) and the type of socket (pendant, ceiling or wall lamp?). You can then tailor the colour and intensity of the light as well as the light fall exactly to your requirements by selecting the shade and, if possible, a glass.

You can combine the MEDIUM bases with six shades and seven different glasses; this alone theoretically results in 252 possible combinations, of which we can only show you a small selection here. We offer the MINIMAL sockets with eleven different pressed copper and sheet steel shades. Each pendant light is supplied with a 1.5 metre long black textile cable. You can also order a different cable colour and/or length as well as a canopy in black or white with or without a cable outlet on the side (p. 6).



Ceiling mount LISILUX M
 Ø 95 mm, height 50 mm.
 Product code **100751**



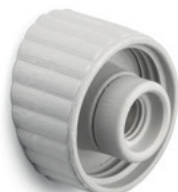
Ceiling mount LISILUX M black
 Ø 95 mm, height 50 mm.
 Product code **101247**



THPG ceiling mount Porcelain M
 Ø 108 mm, height 60 mm.
 Product code **177026**



Wall mount LISILUX M
 Ø 95 mm, projection 60 mm.
 Product code **100758**



THPG wall mount Porcelain M
 Ø 106 mm, projection 60 mm.
 Product code **177027**



Pendant lamp Bakelite®
 With black 1.5 m fabric cable.
 Max. 60 W. Porcelain socket E27.
 Product code **101183**



Shade copper flat
 Ø 350 mm, height 50 mm.
 Product code **101211**



Shade copper round bent
 Ø 260 mm, height 60 mm.
 Product code **101205**



Shade sheet steel flat white
 Ø 350 mm, height 50 mm.
 Product code **101257**



Shade sheet steel round bent white
 Ø 260 mm, height 60 mm.
 Product code **101253**



Shade sheet steel flat black
 Ø 350 mm, height 50 mm.
 Product code **101256**



Shade sheet steel round bent black
 Ø 260 mm, height 60 mm.
 Product code **101252**



Please see page 9 for suitable canopies and cables of different colours and lengths.



Conical threaded opal glass shade
 Ø 170 mm. Total height 150 mm.
 Product code **100844**



Conical threaded clear glass shade
 Ø 170 mm. Total height 150 mm.
 Product code **101184**



Bent conical threaded opal glass shade
 Ø 145 mm. Total height 150 mm.
 Product code **100842**



Opal glass globe M
 Ø 150 mm. Total height 153 mm.
 Product code **100774**



Opal glass drop
 Ø 115 mm. Total height 150 mm.
 Product code **100843**



Clear threaded pressed glass shade
 Ø 100 mm. Total height 190 mm.
 Product code **100841**



Clear glass long M
 Ø 100 mm. Total height 180 mm.
 Product code **100878**



2. Our MINIMAL light kit.



MINIMAL porcelain pendant light white

White porcelain socket with white 1.5 m textile cable. E27, max. 60 W. Weight 200 g. With strain relief. Product code **101178**



MINIMAL pendant light Bakelite® with shade ring

Black Bakelite socket with shade holder and black 1.5 m textile cable. E27, max. 60 W. With integrated strain relief. Product code **101191**



MINIMAL pendant light Bakelite® with pull switch

Black Bakelite socket with black 1.5 m textile cable. E27, max. 60 W. With strain relief and pull switch. Product code **101180**



MINIMAL porcelain ceiling lamp holder white

Straight three-piece porcelain lamp holder. Max. Ø 75 mm, height 60 mm. Weight 200 g. Product code **152643**



MINIMAL porcelain ceiling lamp holder black

Straight three-piece porcelain lamp holder. Max. Ø 75 mm, height 60 mm. Weight 200 g. Product code **152649**



MINIMAL porcelain ceiling lamp holder black, with white shade ring

Straight three-piece porcelain lamp holder. Max. Ø 75 mm, height 60 mm. Weight 200 g. Product code **152655**



MINIMAL porcelain wall lamp holder white

Bevelled three-piece porcelain lamp holder. Max. Ø 75 mm, height 85 mm. Weight 200 g. Product code **152647**



MINIMAL porcelain wall lamp holder black

Bevelled three-piece porcelain lamp holder. Max. Ø 75 mm, height 85 mm. Weight 200 g. Product code **152651**



MINIMAL porcelain wall lamp holder black, with white shade ring

Bevelled three-piece porcelain lamp holder. Max. Ø 75 mm, height 85 mm. Weight 200 g. Product code **152656**



Shade copper round bent

Ø 260 mm, height 60 mm. Product code **101202**



Shade copper flat

Ø 350 mm, height 50 mm. Product code **101208**



Shade copper conical

Ø 240 mm, height 85 mm. Product code **101214**



Shade sheet steel round bent white

Ø 260 mm, height 60 mm. Product code **101251**



Shade sheet steel flat white

Ø 350 mm, height 50 mm. Product code **101255**



Shade sheet steel conical white

Ø 240 mm, height 85 mm. Product code **101259**



Shade sheet steel round bent black

Ø 260 mm, height 60 mm. Product code **101250**



Shade sheet steel flat black

Ø 350 mm, height 50 mm. Product code **101254**



Shade sheet steel conical black

Ø 240 mm, height 85 mm. Product code **101258**



Shade enamelled sheet steel plate-shaped small black

Ø 250 mm, height 20 mm. Product code **101089**



Shade enamelled sheet steel plate-shaped large black

Ø 300 mm, height 25 mm. Product code **101088**

Please see page 9 for suitable canopies and cables of different colours and lengths.



MINIMAL light kit.

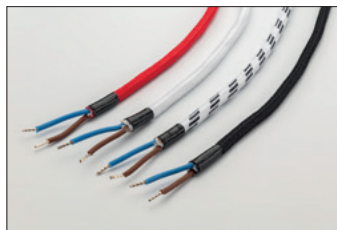
Here you can combine three of our MINIMAL pendant lights presented on page 9 as well as our MINIMAL wall and ceiling sockets made of porcelain with eleven different copper and sheet steel shades. The 1.5 metre long cable of the pendant lights can be replaced with a different colour and the length can be adjusted. These options and matching porcelain canopies can be found on page 9.

Accessories

Made in Europe.

Our lights can be combined with our textile cables, porcelain canopies, matching canopy tubes (tensile reinforcements) or cord switches made of Bakelite® or Duroplast. Whereas some of these accessories were the result of the development work

for our own light series, others were discovered while we were trying to find visually appealing and solid components. They are predominantly manufactured in Germany.



Textile cable 2 x 0.75 two-core

Cable cross-section 2 x 0.75 mm². With an internal carrying thread as a supporting element, which safely carries up to 15 kg.

Red Product code **101130**

White Product code **101128**

White/black Product code **101129**

Black Product code **101127**

Textile cable ready for installation

Stripped cable cores and crimped wire end ferrules.

Product code **900536**



Textile cable 3 x 0.75 three-core

Cable cross-section 3 x 0.75 mm². With an internal carrying thread as a supporting element, which safely carries up to 15 kg. For lights that require a protective earth conductor.

Red Product code **100709**

Brown Product code **100081**

White Product code **100082**

White/black Product code **100084**

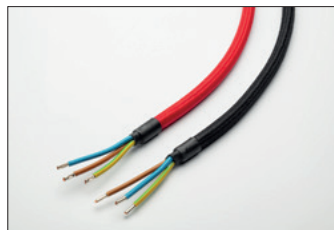
Black/white Product code **100593**

Black Product code **100083**

Textile cable ready for installation

Stripped cable cores and crimped wire end ferrules.

Product code **900536**



Textile cable 3 x 1.5 three-core

Cable cross-section 3 x 1.5 mm². For power strips, extension cords and our power block.

Red Product code **100926**

Black Product code **100924**

Textile cable ready for installation

Stripped cable cores and crimped wire end ferrules.

Product code **900536**

Custom-length textile cables.

Non-preassembled textile cables will be shipped in one piece in the desired length (quantity in the online shopping basket = length in metres).

Note: To connect power strips, you need cables with a cable cross-section of 3 x 1.5 mm².

Surface-mounted textile cable

Textile-sheathed, halogen-free NHXMH cable. Suitable for both indoors and outdoors. Flame-retardant. We offer the cable in any length.

5 x 1.5 mm² Product code **100834**

5 x 2.5 mm² Product code **100294**



Cable clamps

For cables with 10-17 mm diameter. Length 35 mm, width 15 mm, height 24 mm, weight 10 g.

5 piece Product code **100825**

20 piece Product code **100826**

Bakelite® or Duroplast cord switch.

The housing is optionally made of black Bakelite or white/cream-white Duroplast. The built-in push-button is available in two different colours: black and white. Fitted with a textile cable, our cord switch enhances any lamp.

2 A, 250 V, single-pole, with connecting terminal for neutral and earth conductor. For three-core cables, with strain relief clip. Length 60 mm, height 23 mm (incl. push-button 27 mm), width 24 mm. Weight 40 g.

Cord switch duroplast white with white push-button Product code **101261**

Cord switch duroplast white with black push-button Product code **101260**

Cord switch bakelite with white push-button Product code **100466**

Cord switch bakelite with black push-button Product code **100465**

Cord switch duroplast creme with black push-button Product code **101262**



Reliable electrical engineering.

The weight, material and finish indicate the superior quality of these power strips and extension cords. Unlike with their

conventional counterparts, there is no need to hide them under furniture or behind curtains.



Extension cord, socket with protective earth conductor, angled plug, duroplast black

Red cable Product code 100857
Black cable Product code 100855

The THPG power block.

This solid oak block was sawn from the trunk in one piece: 14 x 14 x 14 cm in size and weighing 1.3 kg. Optionally with three or four sockets made of Bakelite® and a 1.5 m long textile cable in black or red. On request, we can fit a Bakelite® carrying handle, replace the straight plug with an angled plug and/or adjust the cable length to suit your requirements.

THPG power block oak (3 sockets)

Black cable Product code 101185
Red cable Product code 101186

Carrying handle Bakelite small for power block

Product code 177400

THPG power block oak (4 sockets)

Black cable Product code 101187
Red cable Product code 101188



Higher quality than its plastic imitations.

The housing is made of black Duroplast. We use a 2.5 m long black or red textile cable for the supply line. Textile cables in other lengths (and colours in corresponding quantities) are available on request. VDE-certified, IP20.

5-way power strip with switch and textile cable

Schuko plug and sockets, black cable Product code 101035

Schuko plug and sockets, red cable Product code 101036

3-way table power strip duroplast black

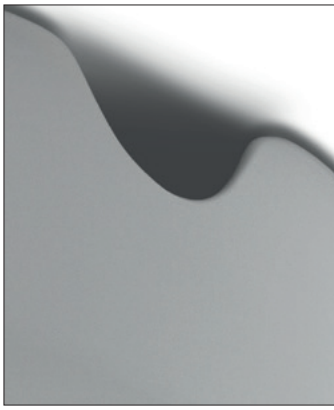
Schuko plug and sockets, red textile cable Product code 100323

Schuko plug and sockets, black textile cable Product code 100339

Angled plug, red textile cable Product code 100457

Angled plug, black textile cable Product code 100854





Porcelain canopy white
White glazed porcelain hemisphere.
Ø 95 mm, height 55 mm.
Porcelain white Product code 101090
Porcelain white with side cable entry
Product code 101194



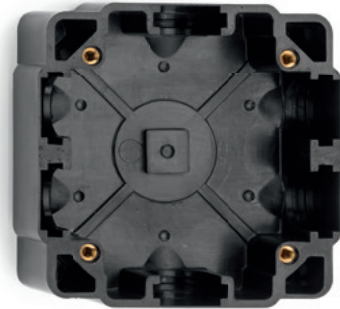
Porcelain canopy black
Black glazed porcelain hemisphere.
Ø 95 mm, height 55 mm.
Porcelain black Product code 101091
Porcelain black with side cable entry
Product code 101193



Canopy tubes
The tubes are made of brass, have a steel suspension at the top and clamp our lamp cables safely. Height 105 mm, width 30 mm. Weight 40 g.
Nickel-plated Product code 100103
Polished Product code 100101
Chrome-plated Product code 100102

Junction box.

Fortunately, we were able to find the tools for this model, which is certainly more than 60 years old. After restoration and appropriate VDE testing, this junction box now fills a gap in our surface-mounted range. Housing made of Bakelite® (black) or Duroplast (white) with six break-out entries with rubber seals for various installation options.



Junction box surface-mounted
AC 400 V. For cables up to 4 x 2.5 mm². 95 x 95 x 45 mm. Weight 140 g. IP44.

Bakelite® Product code 100922
Duroplast Product code 100923



Real incandescent light bulbs for stockpiling.

We still have stock left over - a good opportunity for you to stock up. The matt light bulb from Lindner is also quite impact-resistant.



Bulb radium clear, 10 pack
60 W Product code 101144



Bulb Lindner shock-resistant frosted, 10 pack
60 W Product code 101147
100 W Product code 101148



Plug duroplast black
Black duroplast. 250 V, 16 A, 50 Hz. Only suitable for alternating current. Ø 38 mm. Length 60 mm. Weight 40 g. Product code 139447



Angled plug duroplast black
Black duroplast. 250 V, 16 A, 50 Hz. Only suitable for alternating current. Length 52 mm. Weight 46 g. Product code 100870

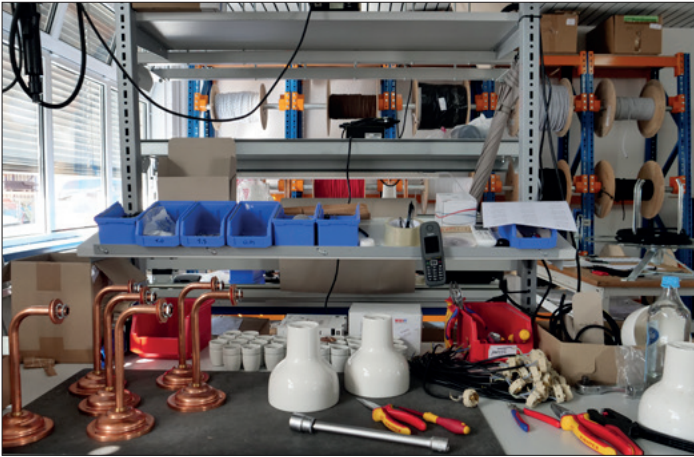


Connector duroplast black
Black duroplast. 250 V, 16 A, 50 Hz. Only suitable for alternating current. Ø 50 mm. Length 70 mm. Weight 68 g. Product code 139448



Switchable intermediate plug duroplast black
Black duroplast. 230 V, 16 A, 50 Hz. Only suitable for alternating current. Ø 50 mm. Length 45 mm. Weight 50 g. Product code 100477

Spare parts



Over the past decades, we have continuously expanded our range of lights and electrical engineering. We always design our products in such a way that they can be easily customised to your individual requirements and can be repaired permanently. Since 2020, we have been assembling

each of our lights ourselves in a specially built workshop in Lüdinghausen, Germany. For you, this means that we have all spare parts for your THPG lights permanently in stock.

What we stand for.

Longevity.

Solid products made of Bakelite®, glass and porcelain.

We work with traditional materials. Not just because they are visually more pleasing. They all have convincing application-specific advantages and guarantee the long service life of our products.

Constructive transparency.

Comprehensible design, easy to dismantle.

Wherever possible, we design our switches, lights and fittings so that every component connection can be detached again and again. In concrete terms, this means screws instead of rivets and glue. This principle, once universally applied but now lost in the world of consumer goods, ensures that our products can be repaired and maintained.



Repairability.

Spare parts from our warehouse at all times.

We guarantee long product cycles. You can obtain spare and wear parts directly from our warehouse in a short space of time - and for many years to come. And if you don't want to do it yourself, we can do it for you. We repair at any time in our workshop.

Quality.

Made in Germany and Europe.

What we do not produce ourselves in our own workshop in Lüdinghausen, we have manufactured for us by long-standing partners. The majority of these partners are based in Germany: in Westphalia, Franconia, the Rhine-Main region, Kraichgau and Vogtland - but also in Lower Silesia in Poland, Piedmont and Veneto in Italy.

What else we do.

Indoor and outdoor switch systems made of porcelain, Bakelite® and white glass · Bathroom fixtures and fittings · Doorbells and many other things that are made to last



Thomas Hoof Produktgesellschaft mbH & Co. KG
Bahnhofstr. 3 · D-59348 Lüdinghausen · Tel. +49 (0)2591 25 90-210 · Fax +49 (0)2591 25 90-190
info@thpg.de · www.thpg.de